

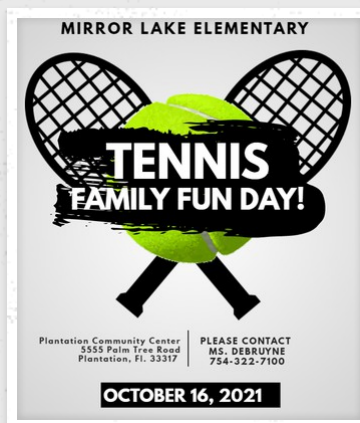
PRINCIPAL'S CORNER

WHAT'S GOING ON AT MIRROR LAKE ELEMENTARY



ANNIE THE MUSICAL PLAY!

Interested students will be able to audition for a part in the play Annie. Anyone who is selected to be part of the play will have to commit to attend all rehearsals. Annie The Musical Play will be performed by our students on January 10, 2022 at 6:00 pm in the school's dining room.



TENNIS TOURNAMENT & FAMILY FUN DAY!

One of my favorite events! Our Tennis Tournament/ Family Fun Day is scheduled for October 16, 2021. Don't miss out in joining us for this family event! Join us for a day of activities and a silent auction. Please contact Ms. DeBruyne for details.

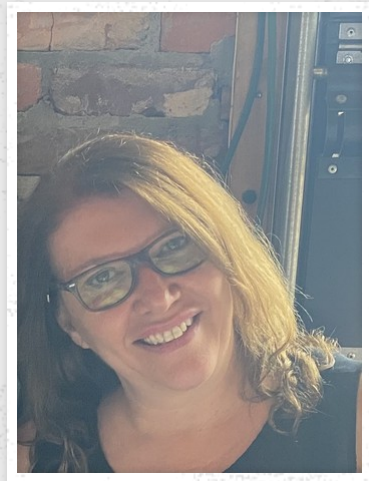


SPORTS THEME THIS YEAR: ONE TEAM, ONE DREAM

Let's welcome back our returning MLE's MVP players and our new team members. We are ready to succeed this school year! We have many programs and activities planned for the school year.

GET TO KNOW YOUR PRINCIPAL: MRS. VELIZ

Dream Vacation: Family Road Trips
Favorite Restaurant: J Alexanders
Go-To Snack or Dessert: Almond Joy
Person I'd Like To Meet: Dwayne Johnson "The Rock"
Favorite Sports: Tennis & Football
Who Most Inspires Me: My girls



GET TO KNOW YOUR ASSISTANT PRINCIPAL: MS. HAFEZ

Dream Vacation: Egypt To Visit Family
Favorite Restaurant: Brio
Go-To Snack or Dessert: Ice Cream
Person I'd Like To Meet: Sherine Bdel-Wahab
Favorite Sports: Soccer
Who Most Inspired You: My Boys



FIRST WEEK OF SCHOOL SPECIAL EVENTS!

August 17, 2021: Open Houses (See Our Website For Specific Times/Grade Levels)
August 17, 2021: Boohoo or Yahoo- Incoming Pre-K and Kindergarten Parents/ Students- stop by the media center to meet other incoming parents
August 18, 2021: First Day of School- Please stop by our photo booths for a quick picture
August 19, 2021: Popsicles with Principal
August 20, 2021: Last Day To Walk Your Child To Class
August 21, 2021: Independence Day- Only students and staff members allowed on campus

ID BADGES

If your child is new to our school, please stop by on August 12th or 13th between 8:00-10:00 am to take your child's picture for his/her ID Badge. All students and staff members must wear their ID Badges daily. Each teacher will have a procedure in place to distribute them in the mornings and collect them at the end of the day.

